



CBD Regional Business and Biodiversity Forum

Pretoria
South Africa

Mainstreaming biodiversity in the mining sector

Warwick Mostert
IBAT Biodiversity and Business Lead
16th March 2026

African Savanna Elephant
Loxodonta africana
Endangered

**DATA
FOR LIFE**



What is IBAT?

Integrated Biodiversity Assessment Tool

- A web-based reporting and mapping tool that provides access to **global, authoritative, biodiversity datasets** for early-stage impact, risk and opportunity scanning/screening.
- IBAT is the only place where each of these datasets is available for commercial users
- An alliance between:



WCMC

A cost recovery mechanism that directly supports the update and maintenance of three of the world's most authoritative global datasets.

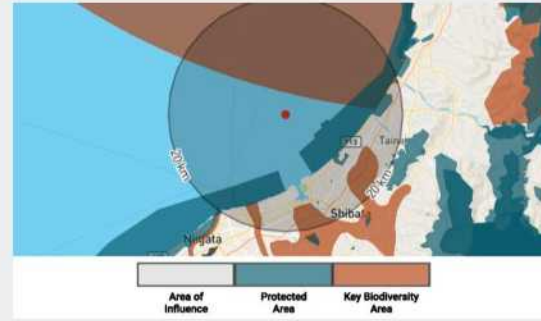
**DATA
FOR LIFE**



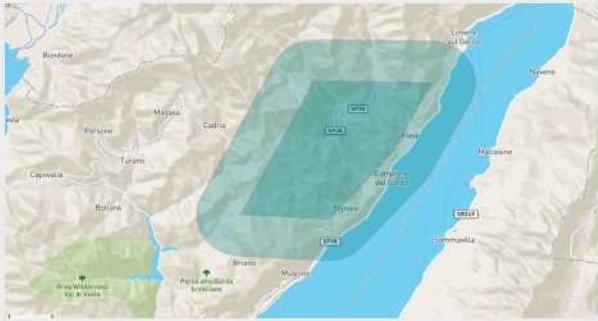
IBAT Platform Features



Upload site information easily



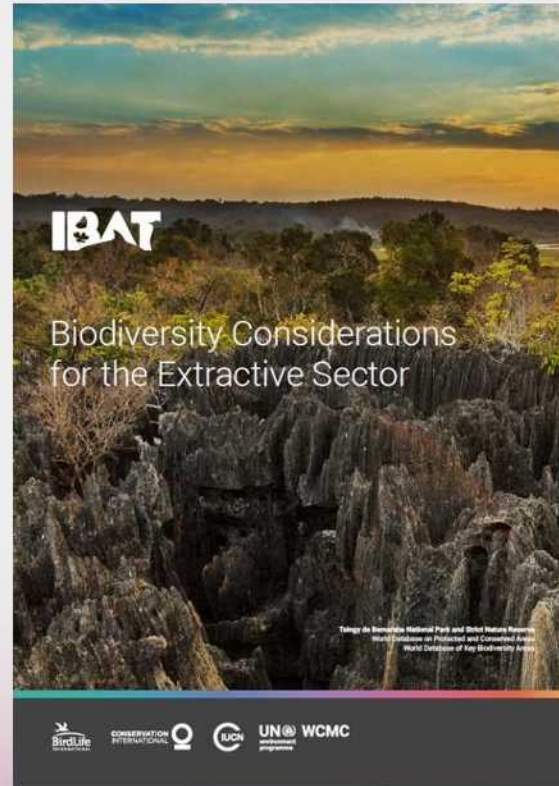
Visualise your biodiversity footprint



Access global spatial data



Generate biodiversity reports



Resources to support the private sector

IBAT

Questions?



**DATA
FOR LIFE**



CONSERVATION
INTERNATIONAL



UN
environment
programme

WCMC

Yellowstone National Park
UNESCO World Heritage Site
World Database on Protected Areas